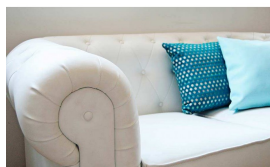


Chester Two-Seater Sofa



Designed and manufactured in Granada, Spain by Fiaka

This emblematic **Chester** sofa of English origin and buttoned in **capitoné**, is a **characteristic and unique** sofa. It's a very special piece suitable for every type of **decoration**.

Indoors Use

Measurements

- **Width:** 160 cm
- **Depth:** 86 cm
- **Height:** 74 cm
- **Seat height:** 48 cm

Nautic (Leatherette)

Nautical upholstery maintains the visual characteristics of the leatherette, but with three great advantages, it is a non-flammable, antibacterial and antifungal fabric. It is the perfect upholstery for public facilities, sanitary and different types of equipment.

